

# Historic Kent Manor Inn

Business Meetings, Executive and Staff Retreats,  
Team Building Functions (outdoor or indoor),  
Single to Multi-day Meetings and Functions,  
Spiritual and Wellness Retreats, Family Reunions,  
Galas and Fund Raising Events

**Minutes from Annapolis, Miles from the Ordinary**

[www.KentManor.com](http://www.KentManor.com)



**2016 Corporate / Group Meeting Information**  
(19 total pages)

**Christine Phillips**  
**Director of Group Sales and Marketing**  
500 Kent Manor Drive  
Kent Island, Stevensville, MD 21666  
**(443)994-7919 fax (410)643-8315**  
[christine@kentmanor.com](mailto:christine@kentmanor.com)

The Inn is situated on a 220-acre farm on the shores of the Chesapeake Bay within close proximity to Baltimore, Washington, Annapolis; centrally located in the Mid Atlantic area. BWI airport is about a 35 minute drive from the Inn. We are located at the first exit right off of the Bay Bridge, only 10 miles from Downtown Annapolis, MD. Our one mile driveway is on the left; 1/8 mile from the Route 50 exit 37, providing quick and easy access to Route 50 east or west. We have 24 guest rooms (each with a private bath) and flexible function space.

### **Below is a brief rundown of what you will expect when you stay with us**

- Privacy with the ability to have exclusive use of the estate when booking all 24 guest rooms and function space The Inn provides free wireless Internet service to all guest rooms and meeting rooms
- Our parking is on site and there is no charge
- Guest room occupancy tax is 5% (this tax is not exemptible)
- MD sales tax is 6% (sales tax is exemptible with documentation)
- No city taxes
- Waterfront dining deck (tables, chairs, umbrellas)
- Outdoor swimming pool (seasonal)
- Pier for boats, fishing or just to enjoy the view
- Contemplation areas on the grounds with a firepit
- Complimentary use of our pedal boats, kayaks and bikes
- Complimentary use of lawn games (horseshoes, volley ball, croquet, outdoor ping pong, bocce ball, corn-hole toss)
- Many guest rooms have porches and balconies Waterfront grounds for Team Building activities
- Private dining room and break out rooms may be booked in addition to your primary meeting space
- Executive Chef and full service dining service / customized menus can be created to meet any dietary requirements.
- Our own Chef led Culinary Team Building programs
- We provide a fully vetted list of Marketing Partners for Team Building, meeting facilitation, etc.

### **A History of Environmental Responsibility**

For nearly 200 years, Historic Kent Manor Inn has recognized that the beauty of its surroundings and abundant natural resources cannot be taken for granted. The original farm worked the land and respected the bounties of the harvest, and today we continue that respect but with a different goal: the preservation of an iconic eastern shore destination for the enjoyment of our guests.

As stewards of this property, we embrace former owner Alexander Thompson's vision of providence by employing many sustainable green practices.

Our harvest today is our guests' enjoyment of the Historic Kent Manor Inn.

Numerous green organizations are aware of our efforts, and we appreciate the acknowledgement and praise from the environmental professionals. However, we have never employed these efforts for certifications or recognition; our goal has always been to be respectful of the land and water so that Historic Kent Manor Inn will continue to be enjoyed for generations.



## Common Areas of the Inn



**Our Parlor**



**Waterfront deck seats up to 65**



**Full Bar Service Available**



**4 Season Porch for casual dining; seats 34**

**Our 24 guest rooms are individually decorated in the finest period furnishings. Fireplaces and porches grace many of the rooms. Each room has a private bath.**

### **Room Details:**

- 2 Executive King Rooms
  - 1 Executive Room with 2 double beds
  - 15 King Rooms (4 with fireplaces)
  - 3 Rooms with 2 double beds - Double / Double
  - 2 Rooms with a Queen Bed
  - 1 Room with a King bed and adjoining room with 2 Twin Beds *Roll-a-way*
- Beds available for \$30.00 per night*

**The Inn can accommodate 30 guests with room sharing so that each guest has their own bed.**

- 3 rooms on the first floor
- 11 rooms on the second floor
- 10 rooms on the third floor

Since the Inn is an historic facility; there is no elevator.  
Please reserve rooms on the first floor for handicap accessibility.

### **In each room you will find:**

- Private bath (each with a bath tub)
- Flat screen TV
- Cable TV
- Keurig Coffee Maker with Green Mountain Coffee
- Ironing board and Iron
- Bottled water at no charge
- Amenities by RUSK Hair
- Hair dryer
- Alarm clock with I-Pod docking station
- Self regulating room temperature controls

**All of our rooms are smoke-free**

**Complimentary wireless Internet service to all guest rooms and meeting rooms**

**Free on premise self-parking**



## Group Room Rates:

**November 21, 2015 to March 31, 2016:**

Weekdays \$179.00      Weekends \$209.00

**April 1, 2016 to November 19, 2016:**

Weekdays \$199.00      Weekends \$229.00

# ppl to room with 1 to a bed	Room accommodates Roll-away	
1		101 – King Room w/ Balcony
1	yes	102 – Executive King w/ Balcony & Water View
1		104 – King Room w/ Balcony & Water View
1		201 – King Room w/ Balcony
1	yes	202 – Executive King w/ Balcony & Water View
1	yes	203 – King Room w/ Balcony
1		204 – King Room w/ Balcony & Water View
1	yes	205 – King Room w/ Fire Place & Balcony
1		206 – King Room w/ Fire Place & Balcony & Water View
1	yes	207 – King Room w/ Fire Place & Balcony
1		208 – King Room w/ Fire Place & Balcony & Water View
2	yes	209 – Double/Double w/ Balcony & Water View
1		210 – Queen w/ Balcony & Water View
1		211 – King Room w/ Balcony & Water View
1		301 – King Room
2	yes	302 – Executive Room w/ Water View / and 2 double beds
1	yes	303 – King Room
2	yes	304 – Double/Double w/ Water View
3		305 – ( 2 Room Suite ) King Room and 2 Twin Beds ( each room has a TV)
1		306 – King Room w/ Water View
1		307 – King Room
1		308 – King Room w/ Water View
1		309 – Queen bed with pull-out sofa
2		310 – Double/Double w/ Water View
<b>30 Guests</b>	<b>9 rooms for roll-a-way use</b>	<b>24 TOTAL GUEST ROOMS</b>

Guest room occupancy tax is 5% (this tax is not exemptible)

MD sales tax is 6% (sales tax is exemptible with documentation)

# Meeting Space

## The Waterfront Garden House

The Garden House provides ultimate privacy for larger group meetings. Multiple windows provide abundant natural light and views of Thompson Creek.

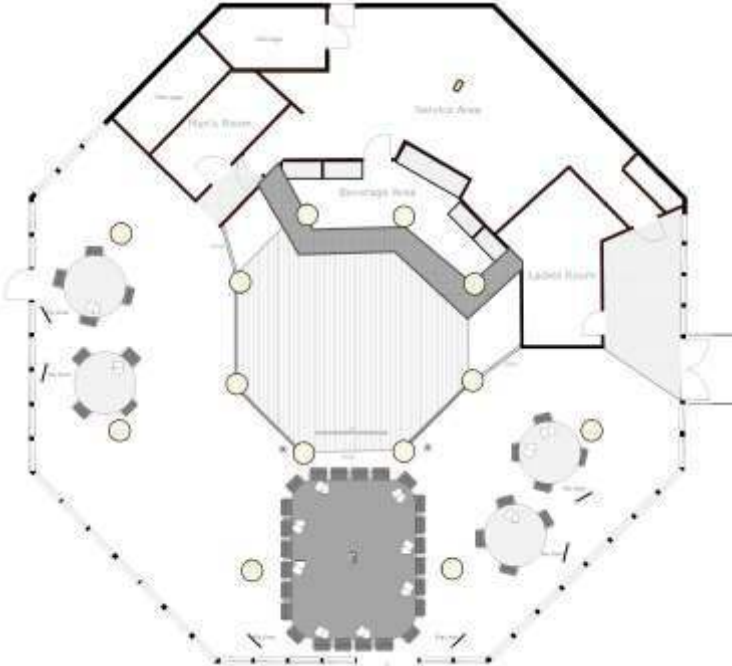
DIMENSIONS	Functional Square Footage
Octagonal shape	1745
	Meeting Space 1460
	Dance Floor 285
Rental Per Day without guest rooms	\$500 (weekdays)
Rental with guest rooms booked	\$400 (weekdays)

Ask us about evening and weekend rental rates

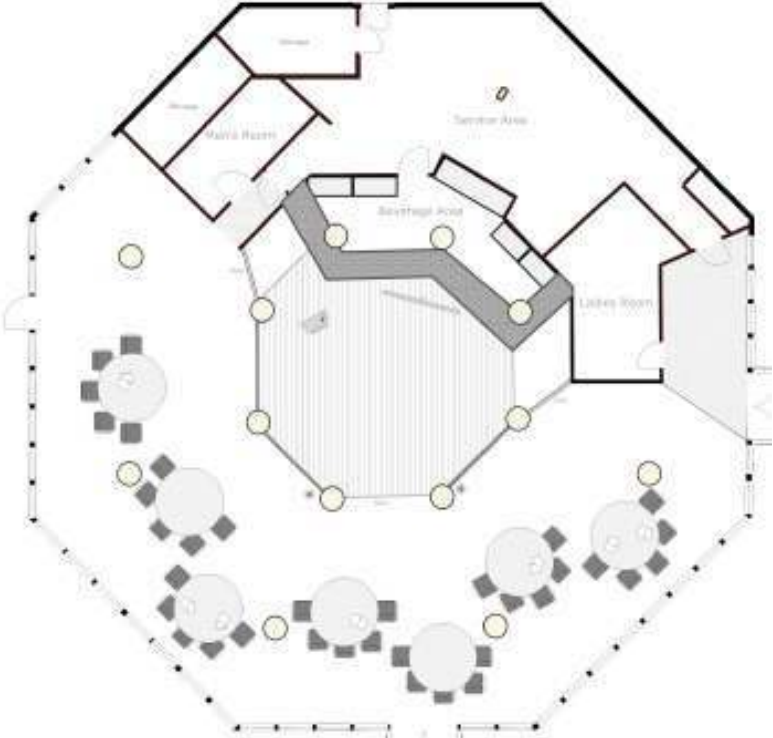


**The Waterfront Garden House (continued)**

**Conference for 24 max**

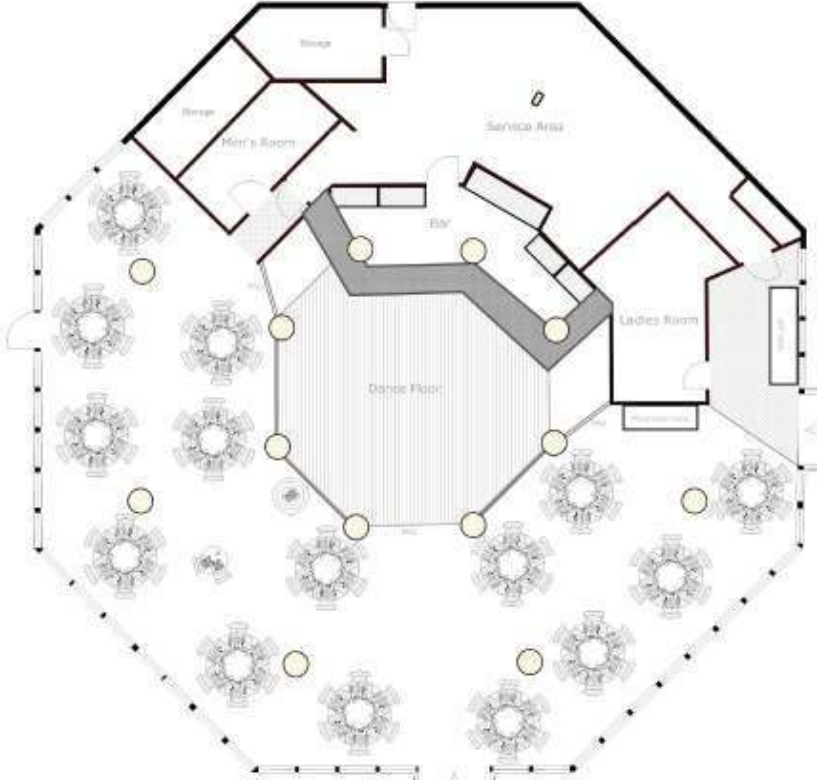


**Half-rounds for 35+**

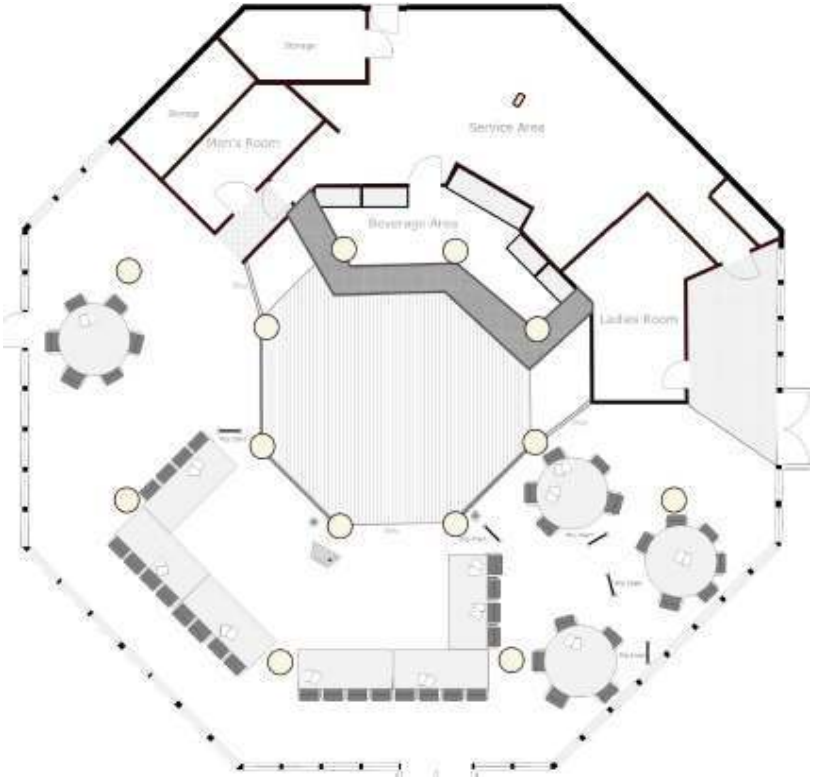


**The Waterfront Garden House (continued)**

**Dining for 152**

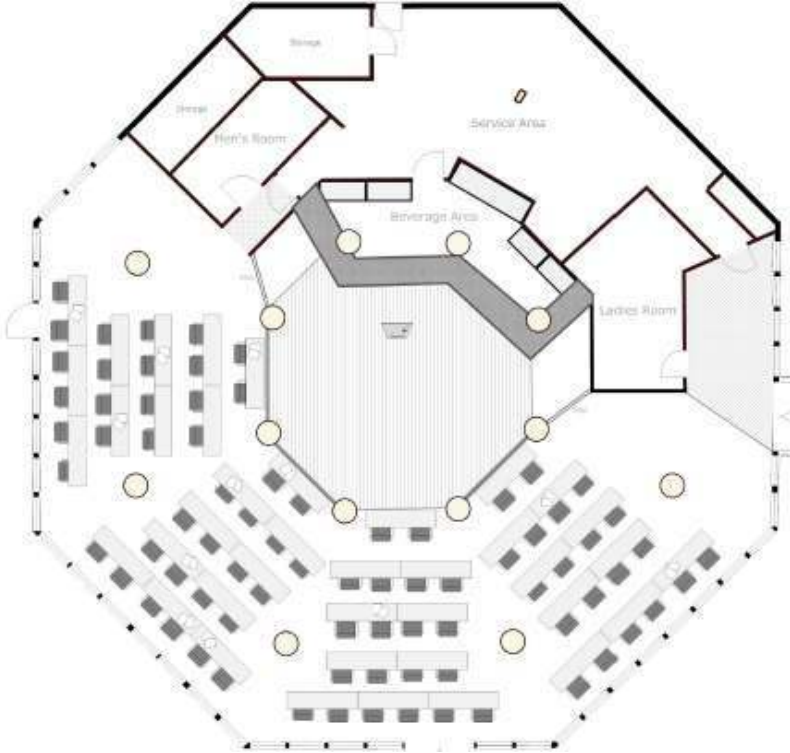


**U-shape for 24**

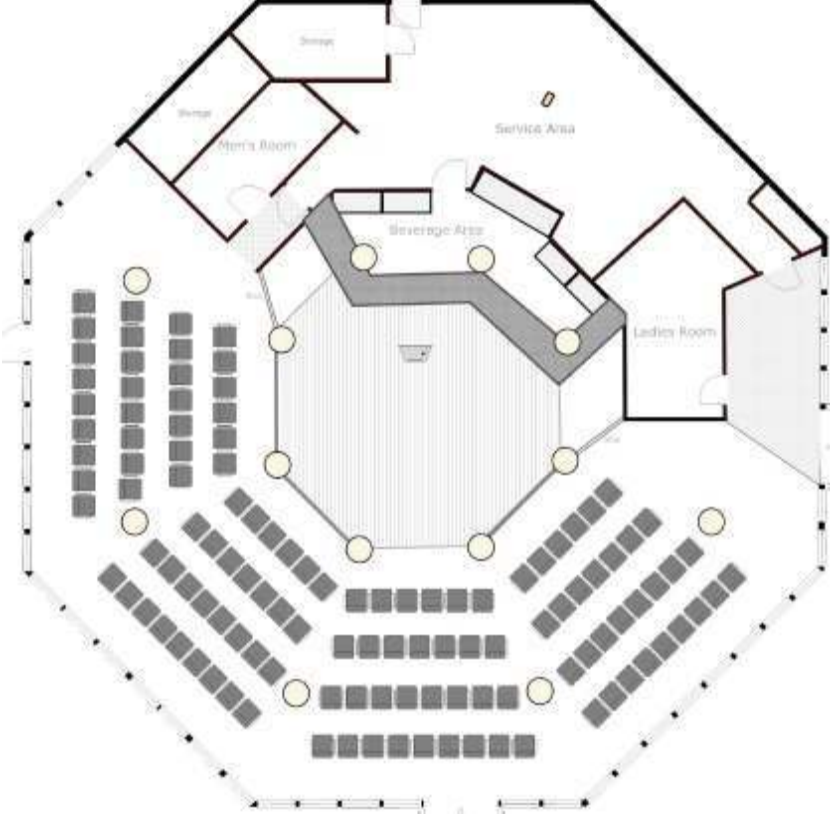


The Waterfront Garden House (continued)

Classroom for 80



Lecture for 120



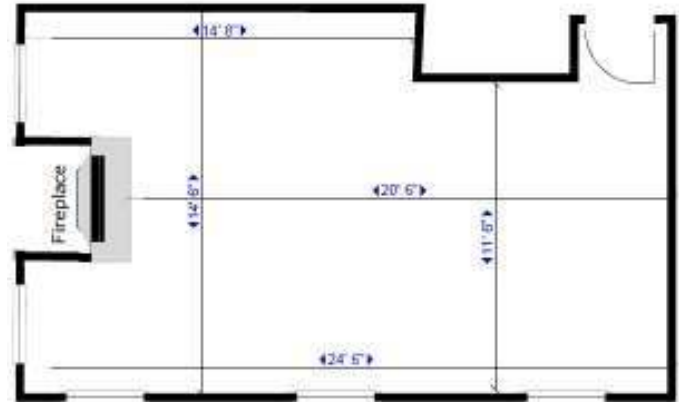


# Meeting Space in the Manor House

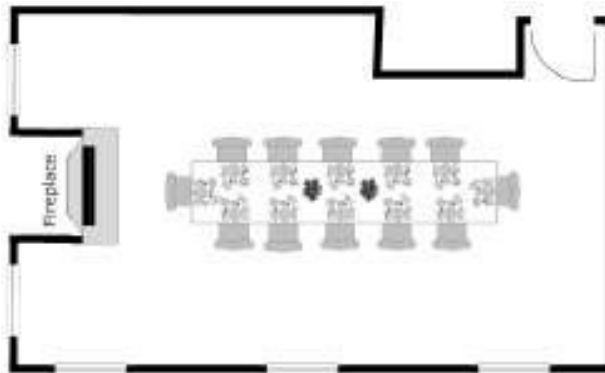
## Brightsworth Room

DIMENSIONS	Functional Square Footage
25 x 15	320
Rental Per Day without guest rooms	\$300 (weekdays)
Rental with guest rooms booked	\$200 (weekdays)

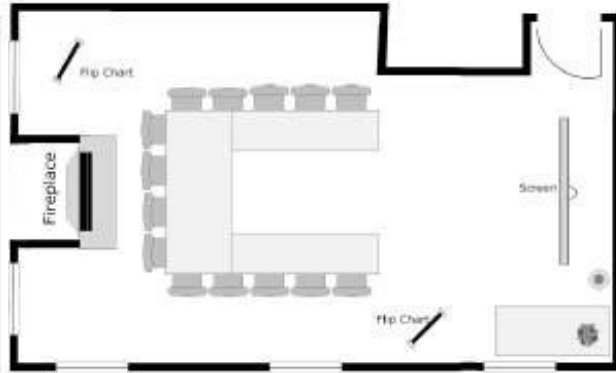
Ask us about evening and weekend rental rates



### Dining Service & Conference for 12



### U-shape for 14

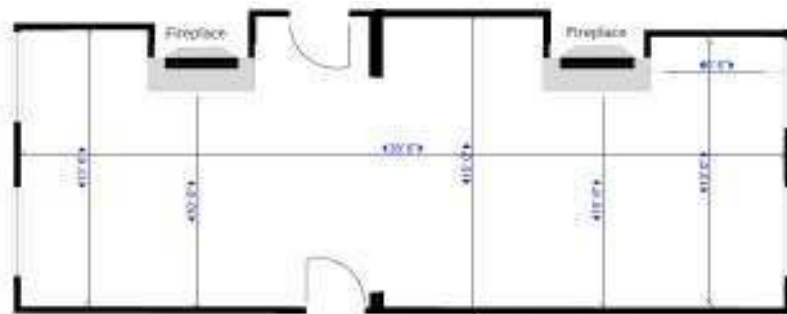


# Meeting Space in the Manor House

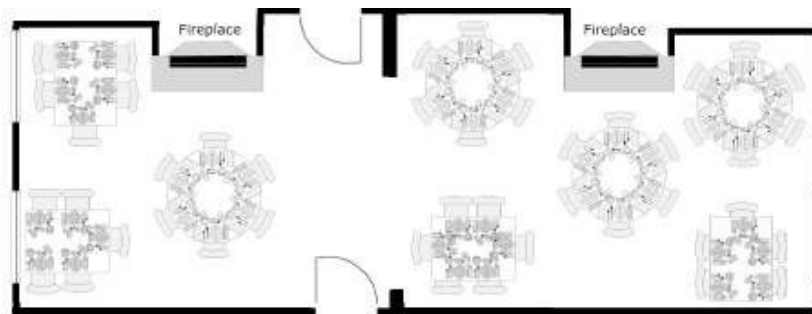
## Thompson Room

DIMENSIONS	Functional Square Footage
38 x 15	470
Rental Per Day without guest rooms	\$400 (weekdays)
Rental with guest rooms booked	\$300 (weekdays)

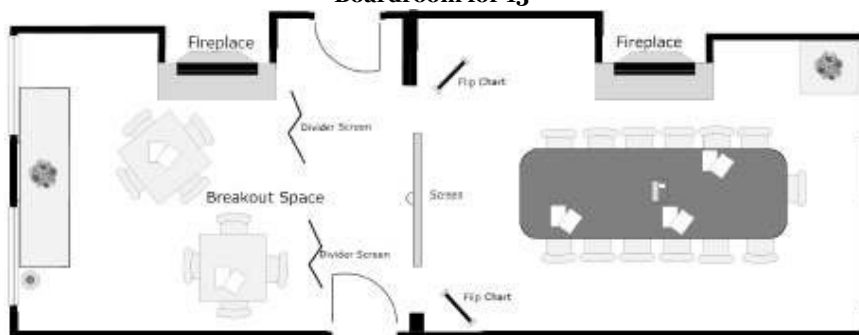
Ask us about evening and weekend rental rates



## Dining Service: Max of 45 ppl

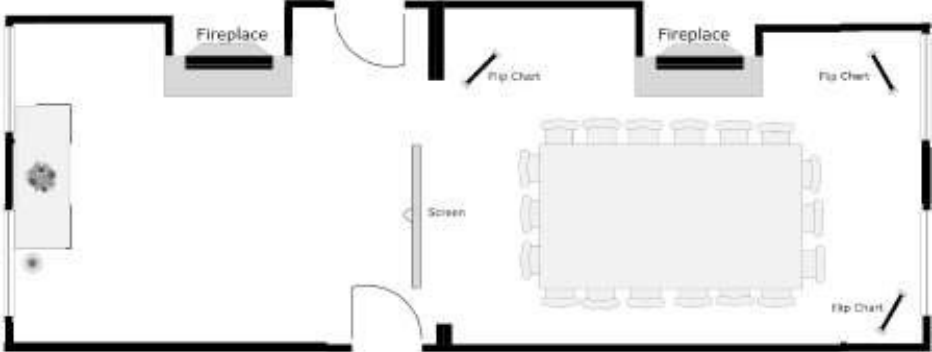


## Boardroom for 13

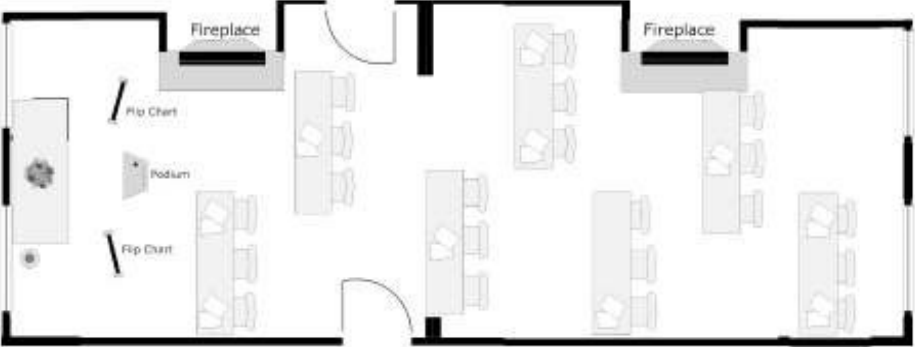


**Thompson Room (continued)**

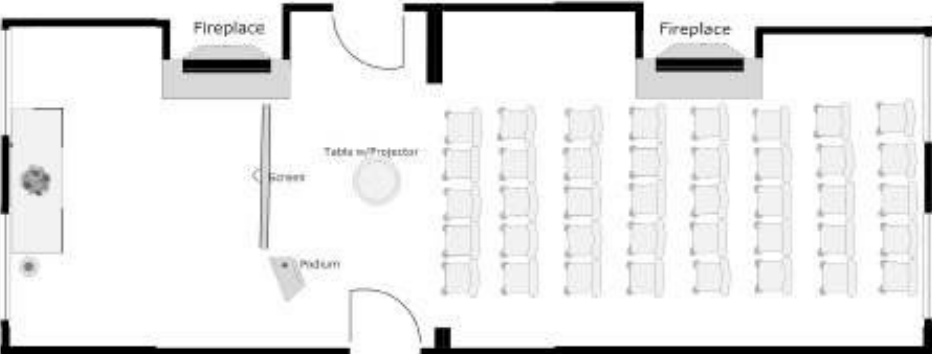
**Conference for 18**



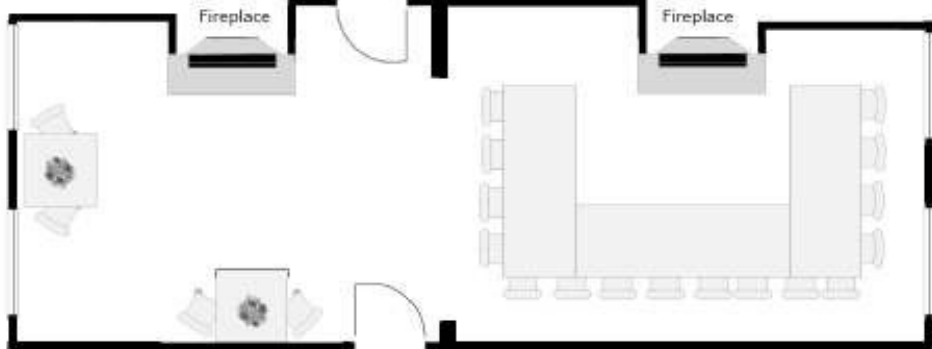
**Classroom for 21 max**



**Lecture for 40 max**



**U-Shape 16 max**



# The Preserve at Historic Kent Manor Inn

THE PRESERVE FUNCTION SPACE	DIMENSIONS	SQ. FOOTAGE
<b>Overall</b>	<b>overall 66 X 115</b>	<b>overall 7590</b>
Main Section For Meetings	overall 66 x 80	overall 5478
Break-out Sections	overall 32 x 66	overall 2112
A	32 x 33	1056
B	32 x 33	1056
For Trade Shows Booth and Registration Areas	12 Vendor Booths	22 Vendor Booths
For Banquet Service	Dining, Dance, Cocktails	Seating to 370
Dining, Dance, Cocktails		Maximum guests 552

**Please contact us for all rental pricing**



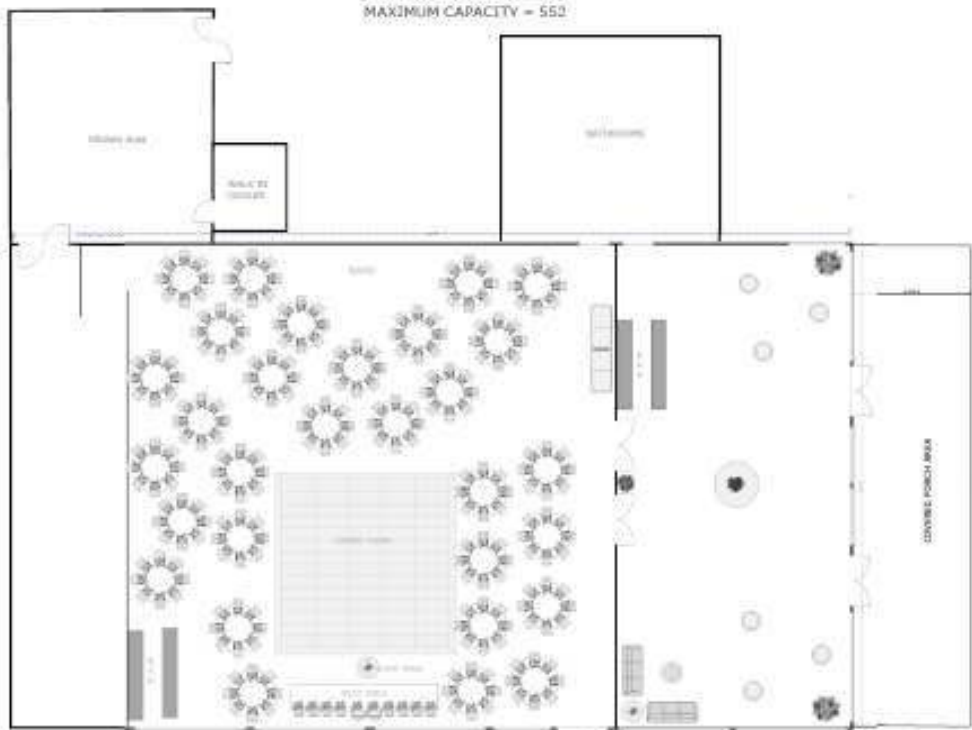
**Total Square Feet 7590**

- Pre-function Space – 2178 sq ft
- Service Area – 1089 sq ft
- Main Dining Space – 4323 sq ft
- Covered Porch 1056 sq ft

# The Preserve (continued)

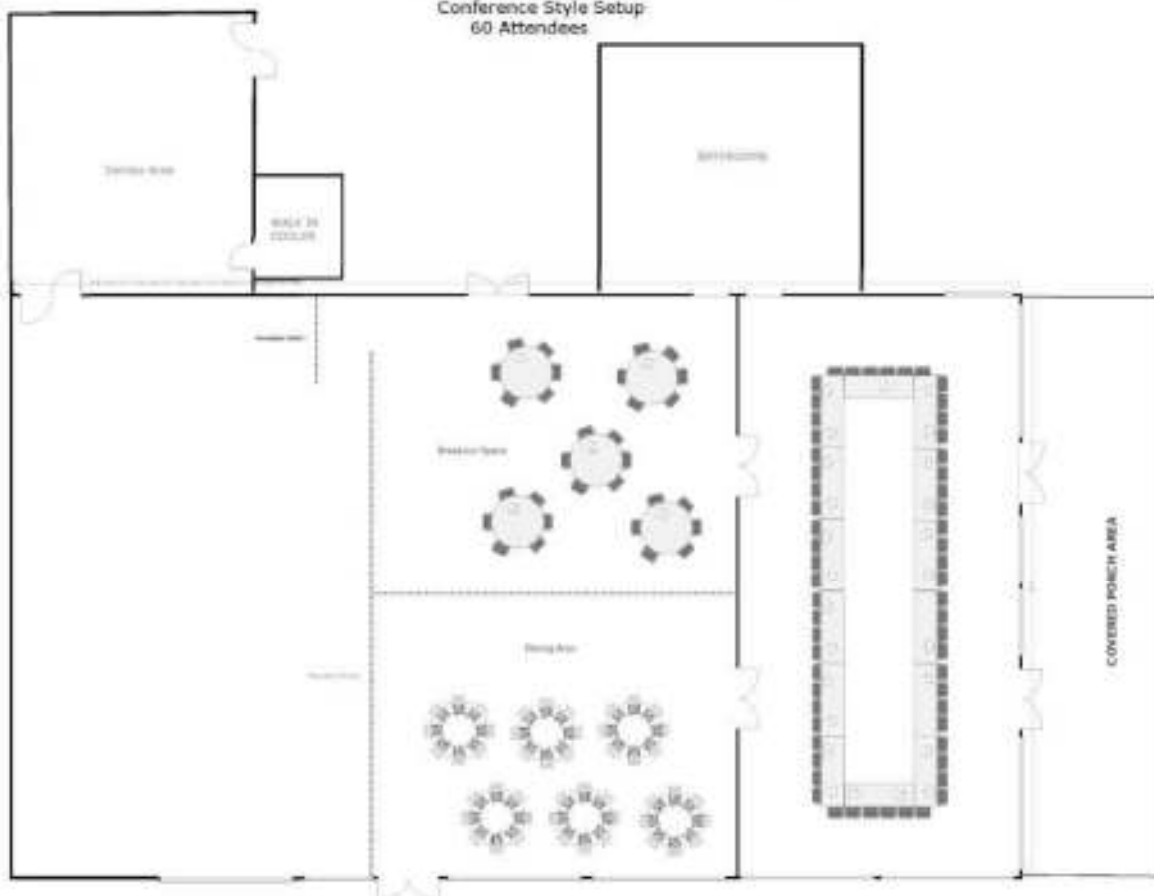
## THE PRESERVE at Historic Kent Manor Inn

SEATING CAPACITY = 370  
MAXIMUM CAPACITY = 552



## THE PRESERVE at Historic Kent Manor Inn

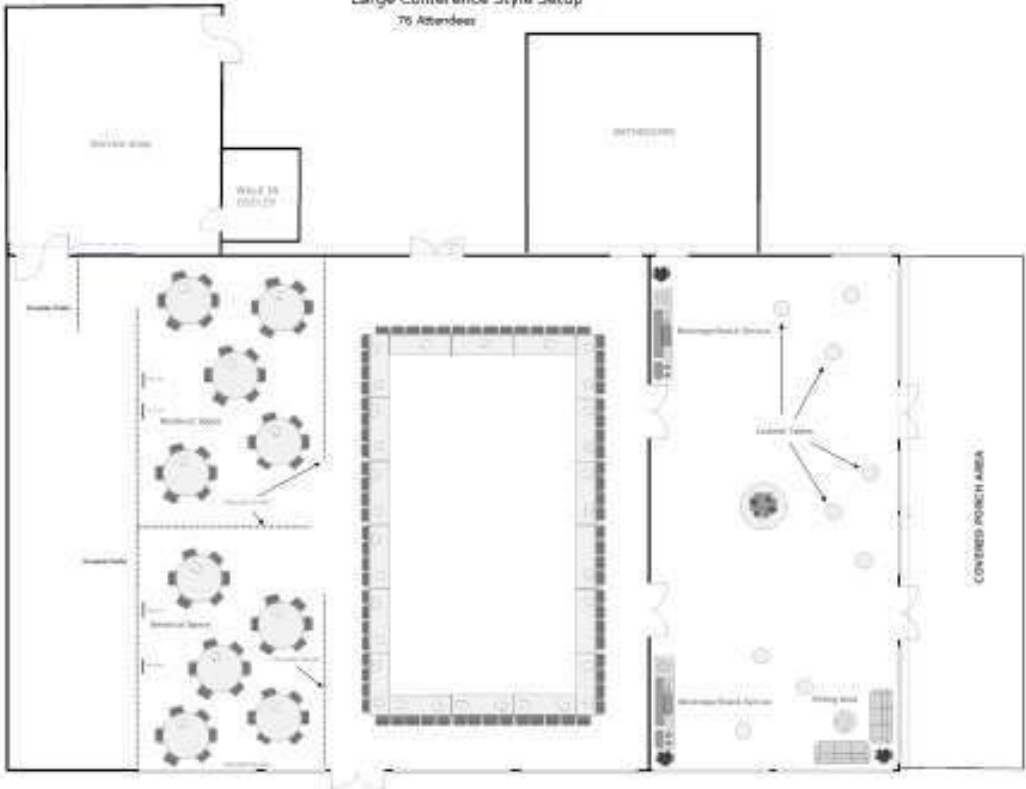
Conference Style Setup  
60 Attendees



The Preserve (continued)

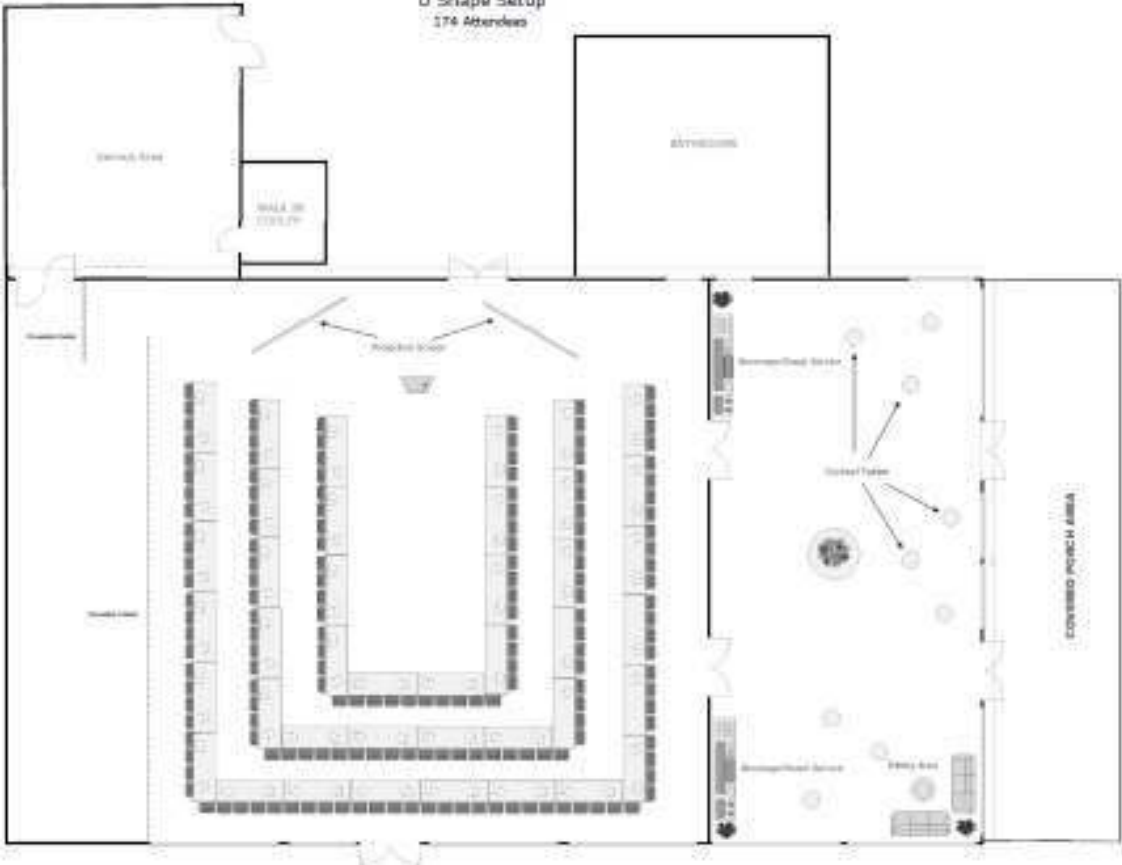
THE PRESERVE at Historic Kent Manor Inn

Large Conference Style Setup  
75 Attendees



THE PRESERVE at Historic Kent Manor Inn

U Shape Setup  
174 Attendees



## **AV / Rental:**

### **Per Day use of equipment:**

Projection screen (8x8) \$25. per day  
Podium \$35. per day  
Flip chart set (markers, tape, easel) \$35. each per day  
White Board with rolling stand (4x3) \$40. per day  
32" Flat Screen TV \$125. per day  
Extension Cord \$1. per day  
Power Strips \$3. per day  
DVD Player \$35. per day  
LCD Projector \$165. per day  
Polycom conference phone \$75. per day  
Laptop stereo speakers \$25. per day

**If additional equipment is needed, we will contact Chesapeake AV for you.  
[www.ChesapeakeAV.com](http://www.ChesapeakeAV.com)**

## Things to do during your stay at Historic Kent Manor Inn... Explore and enjoy Kent Island!

### GOLF COURSES



**Blue Heron Golf Course**, 101 Queen's Colony High Rd., Stevensville (410) 643-5721. Great, fun, fast moving 18 hole course about 3 miles from the Inn. 4130 yds, par 63. The course is owned and operated by the Queen Anne's County Department of Parks & Recreation.

**Queenstown Harbor Golf Links**, 310 Links Lane, Queenstown (410) 827-6611 <http://www.mdgolf.com/courses/queenstownharbor> The **Lakes Course** or The **River Course**; both 18 holes.

### EXPERIENCE SHOPPING ON THE SHORE

#### Queenstown Premium Outlets

441 Outlet Center Drive  
Queenstown, MD 21658  
(410) 827-8699

**65 OUTLET STORES** [Store Listings and Map Link](#)

Find impressive savings at Adidas, Banana Republic, Brooks Brothers, Calvin Klein, Coach, Gucci, J.Crew, Michael Kors, Nike, Polo Ralph Lauren and more!

### Antiques and Treasures are to be found in Queen Anne's County!



[Link to stores and shops in the area](#)



## PLACES OF INTEREST (and fun!)



### **The Chesapeake Bay Exploration Center** - 425 Piney Narrows Road Chester (410) 604-2100

Free to the public, the Exploration Center helps visitors discover the many sites to visit in the region. As Gateways regional information center the staff will assist visitors with directions, information and visitor services for places of interest around the area. There is also a working exhibit that focuses on the Chesapeake Bay and the region. Well worth seeing and fun for kids. The facility is open seven days a week, year-round (except Christmas, New Year's and Easter) and is staffed from 8:30 am - 4:30 PM Monday through Friday, and 9:00AM to 4:00PM on weekends.

**The Cross Island Trail** is a paved trail that runs from Kent Narrows to Terrapin Park in Stevensville. Along the way is Cox Creek (a wood bridge), Love Point Park, Kent Island High School, and more. The paved trail is perfect for roller blading, bicycles, jogging, and just plain old walking! A good place to park is at the "Club One" shopping center in Kent Narrows and under the US50 Bridge at Kent Narrows, or at Love Point Park in Stevensville. The Cross Island Trail ends at Terrapin Park which itself has a bunch of non-paved trails that run along the bays edge.

### **Horsehead Wetlands Center**, 600 Discovery Lane Grasonville (410) 827-5996 / (410) 827-6694

The Horsehead Wetlands Center is a 310 acre peninsula in Grasonville with views of Marsh Creek and Prospect Bay. It has six waterfowl ponds with more than 20 species of captive waterfowl and many other types of wildlife that make this their home. Five of the ponds represent different wetland habitats of North America: Alaskan, Chesapeake, Meadow, Woodland, and Prairie Pothole. Live waterfowl from across the world, including Australia, Asia, and Europe, are also on exhibit, and you can also visit an enclosed aviary with songbirds and tree ducks from the Chesapeake region. The perfect place for a "family day" adventure or wildlife photography, the Center includes a visitor center and gift shop, a butterfly and hummingbird garden, seasonal environmental education programs, picnic areas, and two miles of trails including a salt marsh boardwalk and blinds and towers for wildlife observation.

### **Terrapin Nature Park**, Route 8 and Main Street, Stevensville

Located behind the Chesapeake Bay Business Center (where PRS Guitars is), Terrapin Nature Park consists of miles of nature trails that run along the shore of the Chesapeake Bay, as well as past a very busy pond and marsh areas. There is signage to explain specific areas and points of interest, as well as overlooks for viewing nature. Many of the trails are semi-paved with oyster shells, making the walk clear of overgrowth. This park is tucked away in what seems to be an odd location, but it is well worth a look. To get there by car just take Route 8 (Romancoke Rd) about 3/4 of a mile North of US-50/301 and make your first left (traffic light) which is into the Chesapeake Bay Business Center. Make an immediate right inside the center, and follow the road around for about a half-mile. Park's entrance will be on the right.

## Our Marketing Partners

For all your team building, meeting facilitation, and “fun stuff” to do during your stay

### Meet and Recharge at Historic Kent Manor Inn...Where meetings become successful!



#### Gooseworks Consulting

##### Customized team building activities

Our experiential workshops create an environment that challenges teams to reflect on and improve the dynamics of the group.

All sessions are designed to be engaging and fun in order to serve as a team bonding experience as well as a collective learning opportunity. Contact: (410) 952-5143 [phil@gooseworksconsulting.com](mailto:phil@gooseworksconsulting.com) [www.gooseworksconsulting.com](http://www.gooseworksconsulting.com)

#### Destination Paradise

Customized activities and team building professionals who can provide services at the Inn and Annapolis.

Contact: (800) 391-6560 [www.destination-paradise.com](http://www.destination-paradise.com) [lisa@destination-paradise.com](mailto:lisa@destination-paradise.com)

#### Talk of the Town

Your event source for fun, interactive entertainment – Casino nights, Virtual Reality, Game Shows, Arcade Games, Photo Fun, Moonbounces, Water Games, Field Games, Team Building, Entertainers and Props.

Contact: (301) 738-9500 [www.tottevents.com](http://www.tottevents.com)

#### The Wine Coach®

Wine Tasting, an entertaining way to motivate your staff with a new form of team building.

Contact: (410) 820-4212 [Laurie@thewinecoach.com](mailto:Laurie@thewinecoach.com) [www.thewinecoach.com](http://www.thewinecoach.com)

#### TRANSPORTATION: Kent Island Sedan Services (KISS)

Providing full transportation services to all regional airports (BWI, Reagan National & Dulles).

Town cars, limousines, vans and motor coaches in the fleet.

*Services offered include:*

Airport delivery and pick-up, trains, cruise terminals, weddings, proms, restaurants, marinas, shopping, day trips, movies, theaters and package delivery

To make reservations call (443) 988-3345; Email: [Ride@callkiss.net](mailto:Ride@callkiss.net)

#### Wye River Designs

Wye River Designs offers a unique creative experience in arts, crafts and wellness for the beginner or the experienced crafter.

Offerings include mixed media art including collage, mosaics, jewelry making, ecology crafts, and herbal crafts.

Wye River Designs also offers informal talks on herbs, spices, home remedies and other herbal and wellness topics.

Classes can be conducted at the shop or at the Inn.

Contact: 410 827-0700 Candace Liccione [Candace@wyeriverdesigns.com](mailto:Candace@wyeriverdesigns.com) [www.wyeriverdesigns.com](http://www.wyeriverdesigns.com)

#### Grab-A-Crab Charters

Boat for up to 26 passengers for a cruise or fishing charter. Leave from Kent Manor Inn's dock or from Harris's Crab House's dock.

Contact: Captain Dan's cell (410) 490-1137 [www.grabacrabcharters.com](http://www.grabacrabcharters.com)

#### Lead Dog Charters...The Lucky Dog

Set sail from home port; Kentmorr Marina, 6 miles from Inn. 40 person max passenger / 50' MD built charter boat, heated & AC, side curtains, cabin seats 12.

Contact: (410) 643-7600 or boat cell (301) 704-4246 Capt. Brian Hardman at [leaddog@rockfishing.com](mailto:leaddog@rockfishing.com) [www.rockfishing.com](http://www.rockfishing.com)

## **Our Marketing Partners (continued)**

### **Scavenger Hunts / Geocaching**

Use hand-held GPS devices on a scavenger hunt on the grounds of the Inn. Groups led by a member of the Chesapeake Bay Environmental Center. Contact: (410) 827-6694 [www.bayrestoration.or](http://www.bayrestoration.or)

### **Massage Therapy at the Inn - Under the Palms**

Full body, Seated-Chair (perfect for groups), aromatherapy and hot stone massage

Contact: [www.under-the-palms.com](http://www.under-the-palms.com) (410) 643-9910  
Isabel Bardwell-Jones CMT, BS, Nationally & State Certified

### **Bay Pilates and Wellness**

Bay Pilates and Wellness offers private and group Pilates or CoreAlign lessons for the deconditioned senior to the elite athlete.

Mat classes can be scheduled to take place at the Inn.

Contact: Lorri (410) 924-0451 [www.baypilates.com](http://www.baypilates.com)

### **Zumba Fitness/Cardio-Dance**

Be prepared to sweat and smile your way through a session that mixes great music with easy-to-follow moves.

It's exercise in disguise!

Contact: Michelle O'Brien [dmobriens@verizon.net](mailto:dmobriens@verizon.net) cell: (410)924-6632

### **Steve Moody's Entertainment Connection**

Maryland's premier Disc Jockey entertainer. Steve also offers Karokoe, line dancing, games...tons of fun for all ages.

Contact: Steve (410) 382-4655 [www.SteveMoody.com](http://www.SteveMoody.com)

### **CD Outdoors- Capt. Chris Dollar**

#### **Kayaks, paddle boards & bikes can be delivered to the Inn, enjoy Thompson Creek**

Visit us at The Wharf on the Corsica River in nearby historic Centreville. Or we'll deliver bikes, kayaks or stand-up paddle boards to Kent Manor Inn. We also offer guided fishing and nature tours. Call or email for rates.

Be sure to mention that you're a guest of the Inn.

Contact: (410) 991-8468 [cdollar@cdollaroutdoors.com](mailto:cdollar@cdollaroutdoors.com) [www.cdollaroutdoors.com](http://www.cdollaroutdoors.com)

### **Felix the Cat Sailing Yacht Charter**

Relax and enjoy a private charter ride aboard the catamaran "Felix", a British designed 45' Prout catamaran. The Boat can accommodate up to 12 guests. Felix is based out of the Bay Bridge Marina, a short 5 minute ride from the Inn.

Contact: (443) 822-9153 [www.felixcharter.com](http://www.felixcharter.com)

### **Facials at the Inn**

Karen McGuinness, Vice President of Institut Esthederm. Annapolis. Providing on-site aesthetic facials for those staying at the Inn. Along with your aesthetic facial, she will provide products to meet your skin's energy and biological needs.

Contact: Karen 410-991-0988 [kmcguinness@esthederm-usa.com](mailto:kmcguinness@esthederm-usa.com)

### **Yoga at the Inn**

Chesapeake Yoga & Wellness contact information:

Call: 410-490-0033

Email: [info@chesapeakeyoga.com](mailto:info@chesapeakeyoga.com) or [julie@chesapeakeyoga.com](mailto:julie@chesapeakeyoga.com)

### **XP Laser Sport - Mobile Laser Tag at the Inn**

XP LaserSport can now bring the party to you with our portable arenas and outdoor laser tag equipment.

Our advanced gear can play indoors or outdoors day or night. We can even play in light rain (or snow).

Contact: (301)953-2266 [www.xplasersport.com](http://www.xplasersport.com)

### **Artworks...A Team Building Painting Activity**

#### **Queen Anne's County Arts Council Program**

Creating art together is an enjoyable bonding experience that all groups find rewarding

Talented instructors will guide you step-by-step right here at the Inn.

Contact: (410) 758-2520 See more at: [www.queenannescountyarts.com](http://www.queenannescountyarts.com)